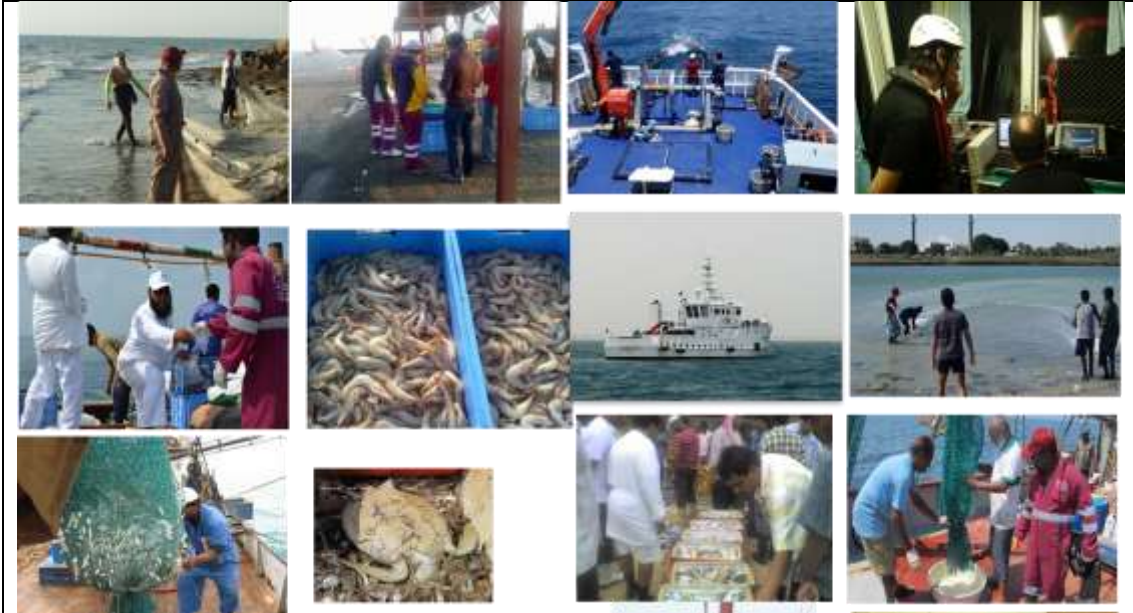




Name 姓名	Yu-Jia Lin 林裕嘉
Email 電子信箱	YJLin888@mail.nsysu.edu.tw
Tel 電話	886-7-5252000 ext. 5391
Office 辦公室	MA2012-3

專長領域

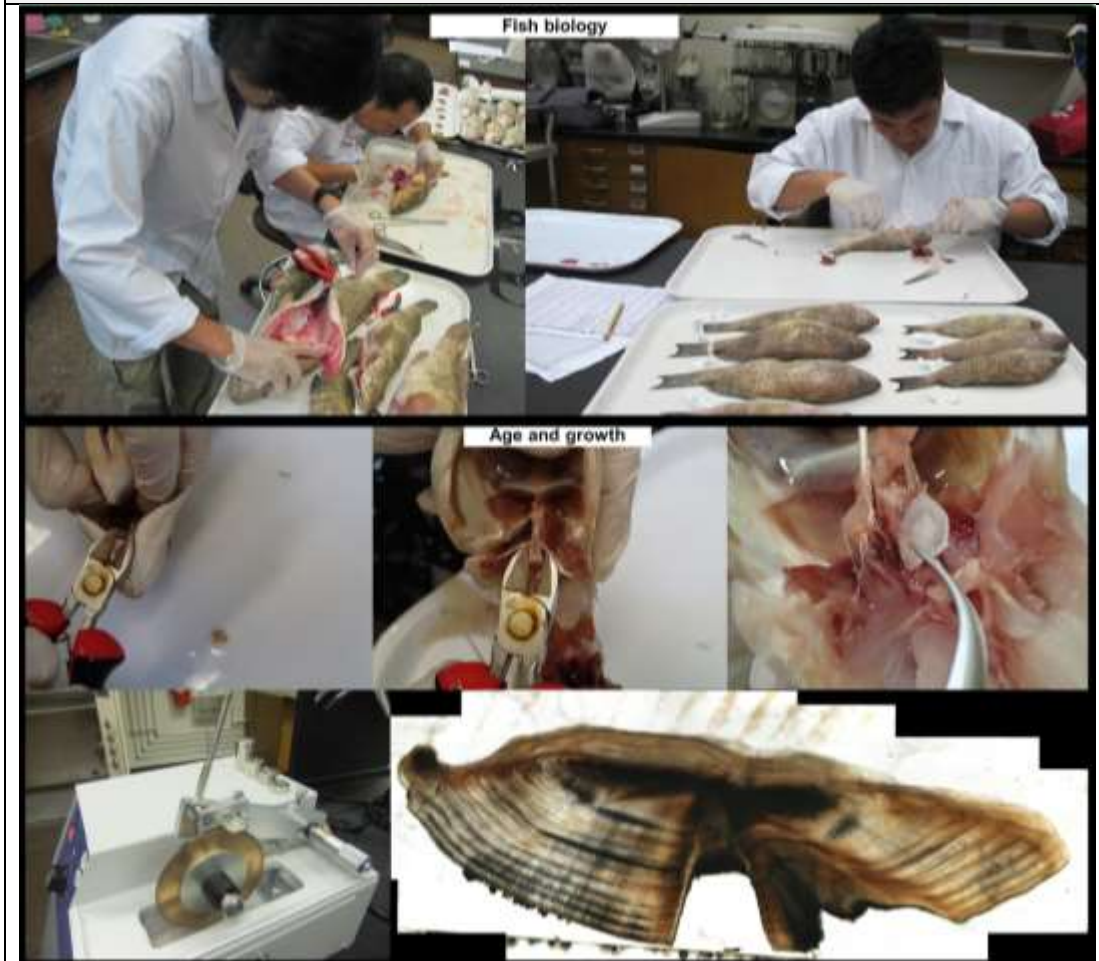
評估漁業對資源及環境之影響



評估海洋生態系健康情況以及收集基礎資料



魚類生物學及生活史研究比較



最近三年發表之 SCI 期刊文章

1. **Lin, Y.J.**, Roa-Ureta, R.H., Premlal, P., Nazeer, Z., Pulikkoden, A.R.K., Qurban, M.A., Prihartato, P.K., Alghamdi, H.A., Qasem, A.M. and Rabaoui, L. (2022). Habitat-forming organisms in the offshore seabed of the western Arabian Gulf. *Regional Studies in Marine Science*, p.102446. (SCI, 5-year IF = 2.24, 54/113 in *Marine and Freshwater Biology*, Q2).
2. **Lin, Y. J.**, Roa-Ureta, R. H., Pulikkoden, A. R. K., Premlal, P., Nazeer, Z., Qurban, M. A., & Rabaoui, L. (2021). Essential fish habitats of demersal fish in the western Arabian Gulf. *Marine Pollution Bulletin* 173, 113013. (SCI, 5-year Impact Factor = 5.907, 3/110 in *Marine and Freshwater Biology*, Q1).
3. **Lin, Y. J.**, Roa-Ureta, R. H., Basali, A. U., Alcaria, J. F. A., Lindo, R., Qurban, M. A., Prihartato, P. K., Qasem, A. & Rabaoui, L. (2021). Coarser taxonomic resolutions are informative in revealing fish community abundance trends for the world's warmest coral reefs. *Coral Reefs* 40(6), 1741-1756. (SCI, 5-year Impact Factor = 3.880, 12/110 in *Marine and Freshwater Biology* Q1).
4. Rabaoui, L., Yacoubi, L., **Lin, Y. J.**, Joydas, T. V., Maneja, R. H., Dagoy, J., Qurban,

- M.A & Roa-Ureta, R. H. (2021). Distribution, abundance, and life history traits of the blue swimming crab *Portunus segnis* (Forskål, 1775) in the Saudi waters of the Arabian Gulf. *Regional Studies in Marine Science* 101895. (SCI, 5-year Impact Factor = 1.962, 66/110 in *Marine and Freshwater Biology*, Q3)
5. Rabaoui, L., Roa-Ureta, R., Yacoubi, L., **Lin, Y.J.**, Maneja, R., Joydas, T.V., Panickan, P., Gopalan, J., Loughland, R., Prihartato, P.K. and Qassem, A., 2021. Diversity, distribution, and density of marine mammals along the Saudi waters of the Arabian Gulf: update from a multi-method approach. *Frontiers in Marine Science* 8. (SCI, 5-year Impact Factor = 5.125, 6/110 in *Environmental Science*, Q1.)
 6. **Lin, Y.J.**, Rabaoui, L., Maneja, R.H., Pulikkoden, A.R.K., Premlal, P., Nazeer, Z., Qurban, M.A., Abdulkader, K., Prihartato, P.K., Qasem, A.M. and Fita, N. (2021). Strengths and weaknesses in the long-term sustainability of two sympatric seabreams (*Argyrops spinifer* and *Rhabdosargus haffara*, Sparidae). *Journal of Fish Biology* 98(5), pp.1329-1341. (SCI, 5-year IF = 2.250, 46/110 in *Marine and Freshwater Biology*, Q2).
 7. **Lin, Y.J.**, Rabaoui, L., Basali, A.U., Lopez, M., Lindo, R., Krishnakumar, P.K., Qurban, M.A., Prihartato, P.K., Cortes, D.L., Qasem, A., Al-Abdulkader, K., Roa-Ureta, R., (2021). Long-term ecological changes in fishes and macro-invertebrates in the world's warmest coral reefs. *Science of The Total Environment* 750(1), p.142254. (SCI, 5-year IF = 6.419, 22/265 in *Environmental Sciences*, Q1).
 8. Williams, C.T., McIvor, A.J., Wallace, E.M., **Lin, Y.J.** and Berumen, M.L., 2021. Genetic diversity and life-history traits of bonefish *Albula* spp. from the Red Sea. *Journal of Fish Biology* 98(3) 855-864. (SCI, 5-year IF = 1.941, 50/110 in *Marine and Freshwater Biology*, Q2).
 9. **Lin, Y.J.** and Jessop, B.M. (2020). Application of generalized depletion model to recruitment of American eel elvers and empirical support from survey data. *Transactions of the American Fisheries Society* 149(5) 576-586. (SCI, 5-year IF = 1.694, 28/53 in *Fisheries*, Q3).
 10. Hsu, H.H., Nazeer, Z.M., **Lin, Y.J.**, Panickan, P., Al-Abdulkader, K., Loughland, R. and Qurban, M.A. (2020). Biological aspects of juvenile great hammerhead sharks *Sphyrna mokarran* from the Arabian Gulf. *Marine and Freshwater Research* 72(1) 110-117. (SCI, 5-year IF = 1.773, 51/106 in *Marine and Freshwater Biology*, Q2).
 11. Rabaoui, L., Cusack, M., Saderne, V., Krishnakumar, P.K., **Lin, Y.J.**, Shemsi, A.M., El Zrelli, R., Arias-Ortiz, A., Masqué, P., Duarte, C.M. and Qurban, M.A. (2020). Anthropogenic-induced acceleration of elemental burial rates in blue carbon repositories of the Arabian Gulf. *Science of The Total Environment*, p.135177. (SCI, 5-year IF = 6.419, 22/265 in *Environmental Sciences*, Q1).